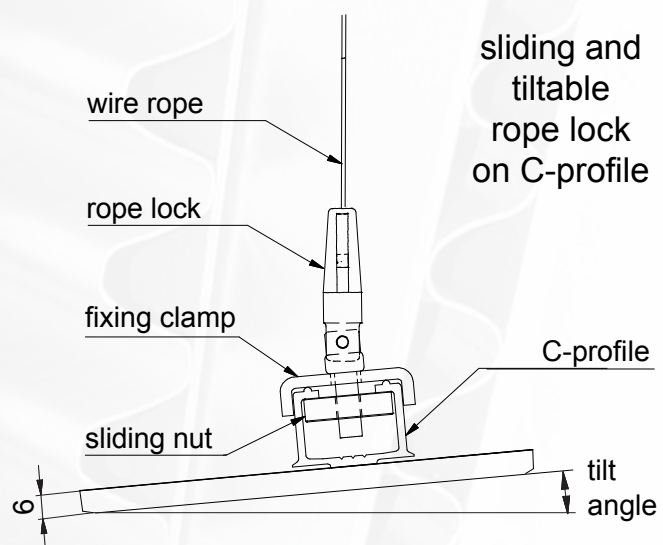


Metawell® acoustic element

MOUNTING INSTRUCTION



ACOUSTIC ELEMENT	SAFETY INSTRUCTIONS
	<p>LOCATION</p> <ul style="list-style-type: none"> • Metawell® acoustic elements shall not be used outside of buildings. • Metawell® acoustic elements shall not be exposed to chlorine vapours or other aggressive atmospheres. <p>MECHANICAL LOAD CAPABILITY</p> <ul style="list-style-type: none"> • Working load limit of the wire rope and the rope lock is 15 kg. • Apply all four suspensions of the acoustic element. • Sections shall not affect the stability of the acoustic elements. • Fixtures and extensions shall not exceed the working load limit of the wire ropes and the rope locks. Please keep in mind that the acoustic element may be hinged sideways temporarily. <p>FOLDING</p> <ul style="list-style-type: none"> • Folding of the Metawell® acoustic element is not allowed with inflexible rope locks. Use hinged rope locks that avoid a bending or deflecting of the wire ropes. • Metawell® acoustic elements that are used to be folded have to be equipped with additional safety wires. <p>ASSEMBLY</p> <ul style="list-style-type: none"> • Check before assembly that the wire ropes have no visible damages and are free of oil or other lubricants. • Metawell® acoustic elements have to be assembled by qualified specialists only. • Use enclosed parts for mounting. • Metawell® acoustic elements are not suitable for lifting loads.
Errors and changes reserved	Assembly information for Metawell® acoustic element

ACOUSTIC ELEMENT

ASSEMBLY INSTRUCTION

ATTACHMENT PARTS

hook with
safety clamp

(to be hooked
in a suitable eyelet
on the ceiling)

wire rope

(to be threat
in rope lock)

rope lock

(to be screwed
in sliding nut)

nut

washer

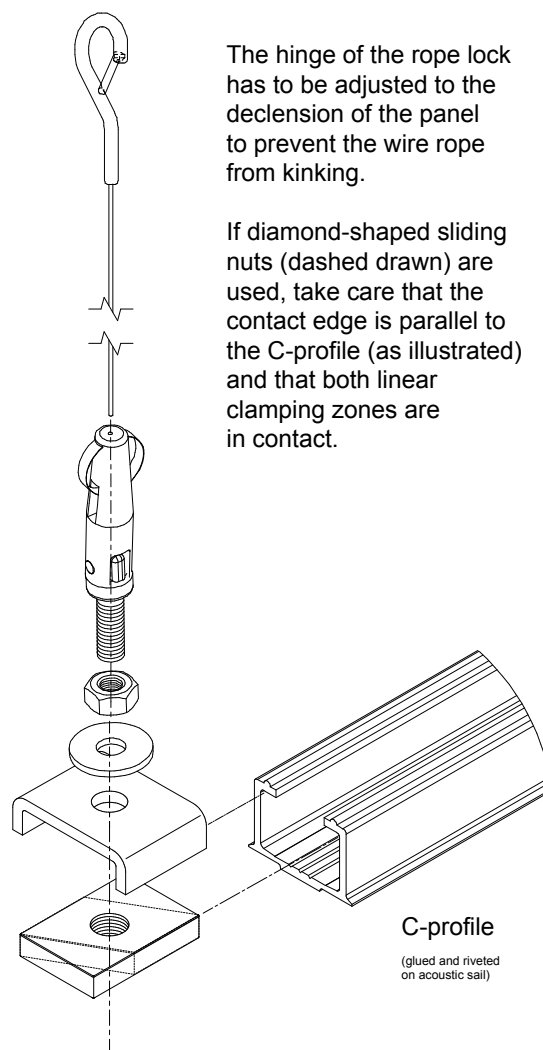
fixing clamp

sliding nut

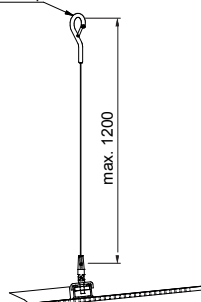
(to be slid in
C-profile)

The hinge of the rope lock has to be adjusted to the declension of the panel to prevent the wire rope from kinking.

If diamond-shaped sliding nuts (dashed drawn) are used, take care that the contact edge is parallel to the C-profile (as illustrated) and that both linear clamping zones are in contact.



hook with safety clamp



wire rope

rope lock

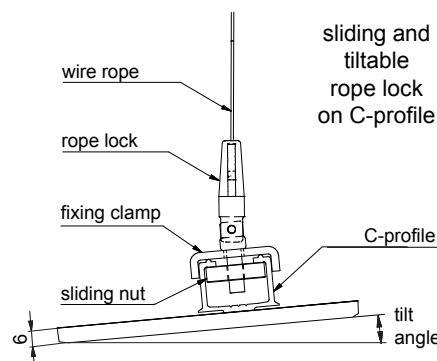
fixing clamp

sliding nut

sliding and
tiltable
rope lock
on C-profile

C-profile

tilt
angle

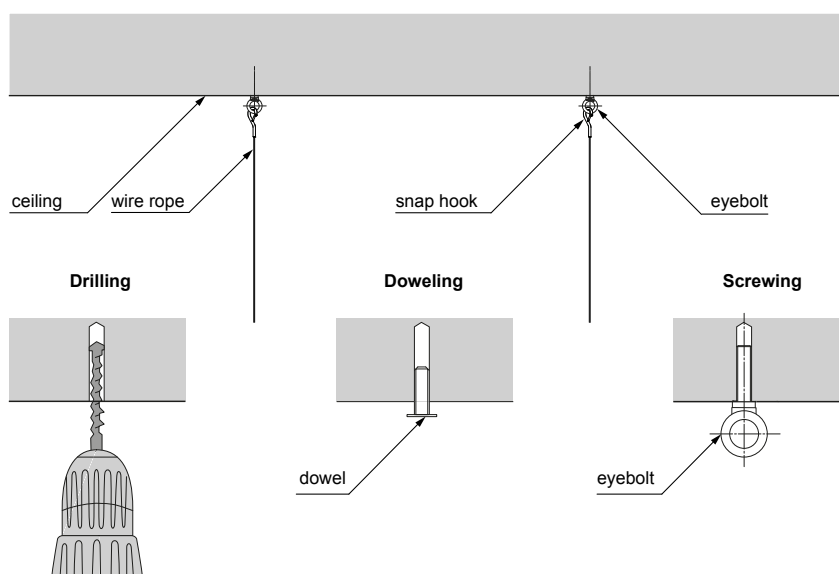
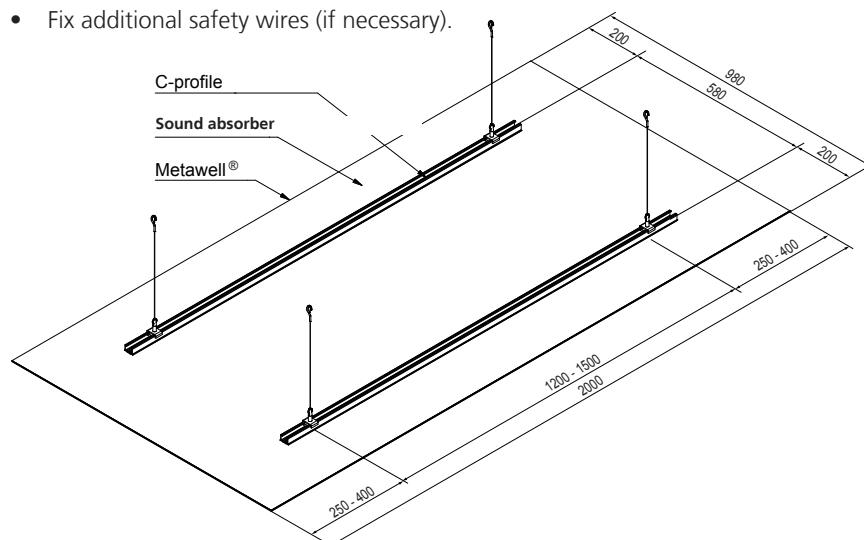


ACOUSTIC ELEMENT

ASSEMBLY INSTRUCTION

WIRE ROPE ASSEMBLY

- Specify the drilling hole positions by measurement.
- Drill the holes in the ceiling with respect to the mounting system (dowel, wooden screw etc.).
- Fix the wire eyelet with a suitable screw at the chosen mounting system (dowel, wooden screw etc.).
- Click snap hook into eyelet
- Do not bend or deflect wire ropes.
- Fix additional safety wires (if necessary).

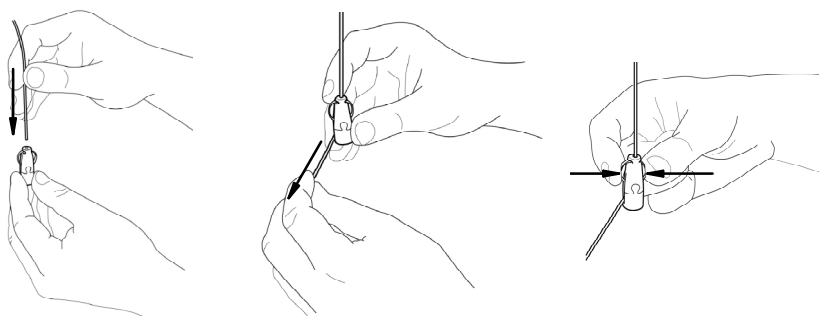


ACOUSTIC ELEMENT

ASSEMBLY INSTRUCTION

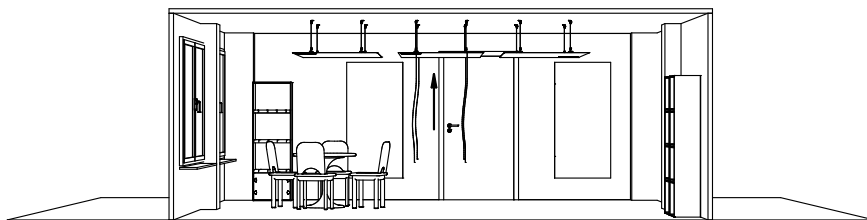
ROPE LOCK

- Move the rope locks on the C-profile according the suspension points on the ceiling.
- Thread the wire rope into the rope lock on the acoustic element.
- Before fixing, check that the wire rope hangs vertically and can move freely.
- Slide the wire rope through the rope lock until its end can be handled.
- Pull the wire rope until it reached the desired suspension height.
- After assembly of all wire ropes you can release the rope locks by pressing the springbows and adjust each wire rope to the perfect length.



ADJUSTMENT

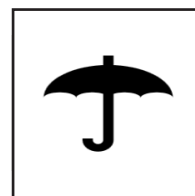
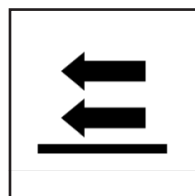
- The acoustic elements can be aligned by changing the suspension height and moving the rope lock on the C-profile.



ACOUSTIC ELEMENT

PACKAGING

- weight approx. 10 kg
- size approx. 200 x 100 x 6 cm
- store horizontally
- handle carefully



SCOPE OF SUPPLY

- panel with perforation
- sound absorber
- 2 C-profiles
- 4 wire suspension with rope sockets, sliding blocks and eyelets
- safety instructions
- assembly instruction

Metawell GmbH
D-86633 Neuburg / Donau
Schleifmühlweg 31

<https://www.metawell.com>
akustiksegel@metawell.com

Telefon +49 8431/67 15-0
Telefax +49 8431/67 15-792

certified according to EN ISO 9001

Errors and changes reserved

Assembly information for Metawell® acoustic element